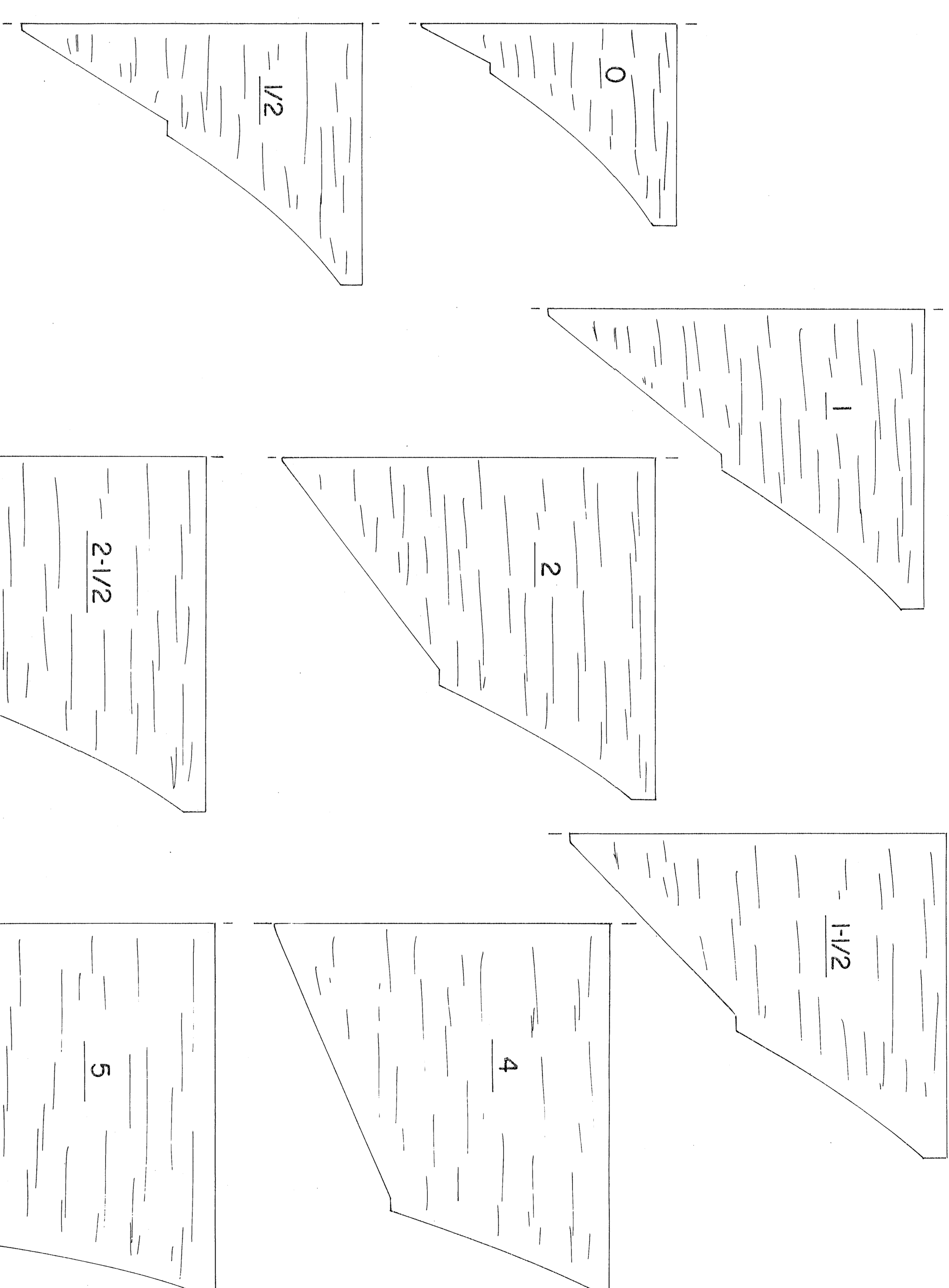
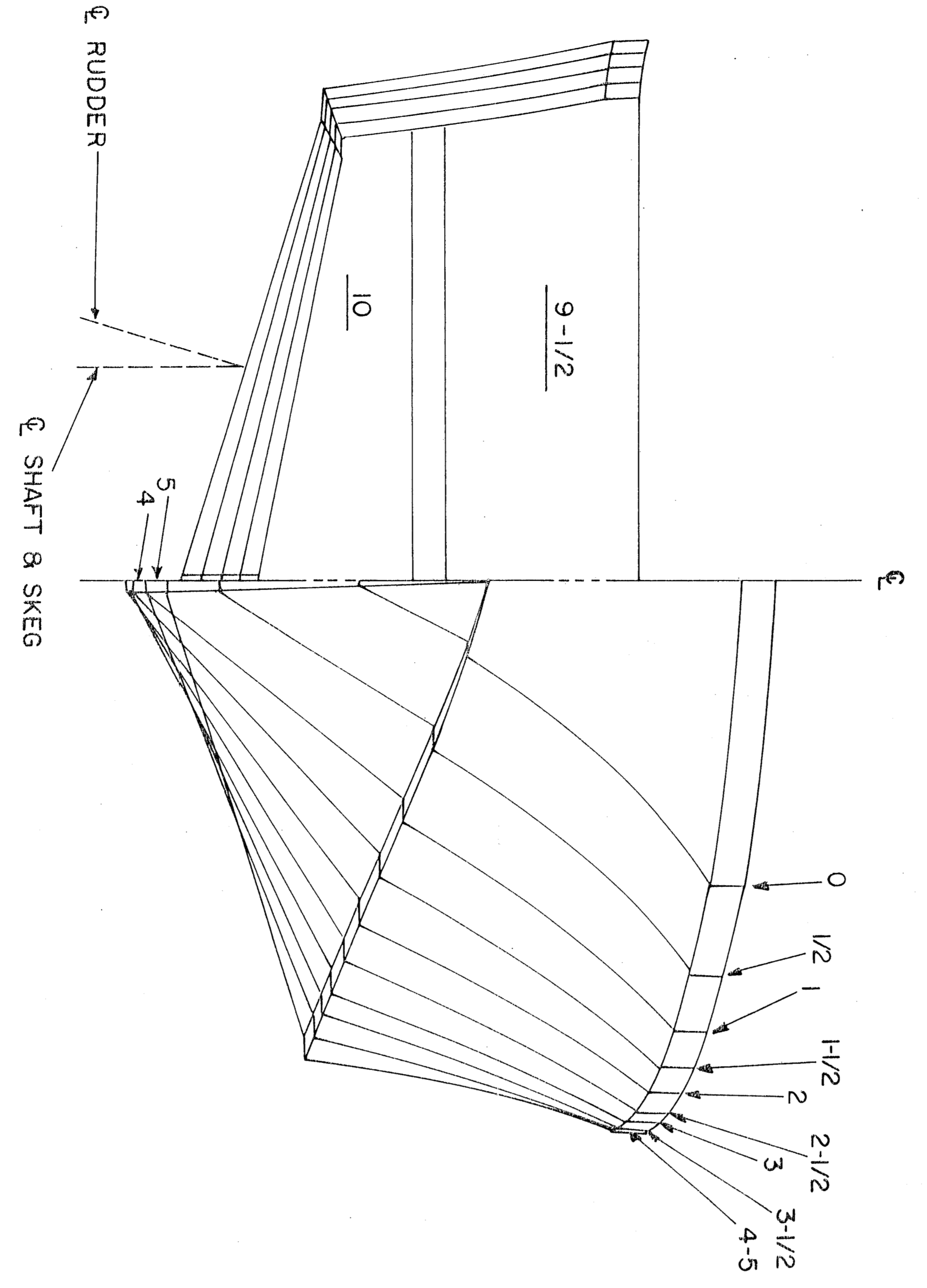
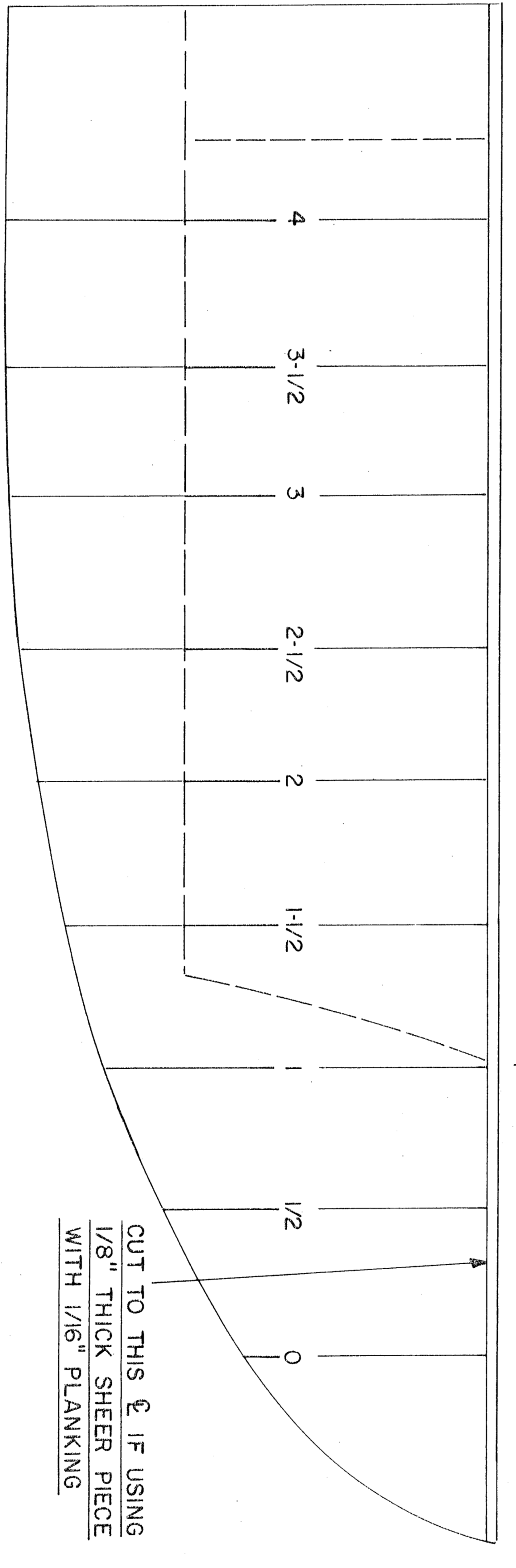


NOTE: MAKE ALL HULL FRAMES FROM 1/8" OR 1/4" BALSA SHEET - SEE DETAIL SHEET 1

HULL PLAN



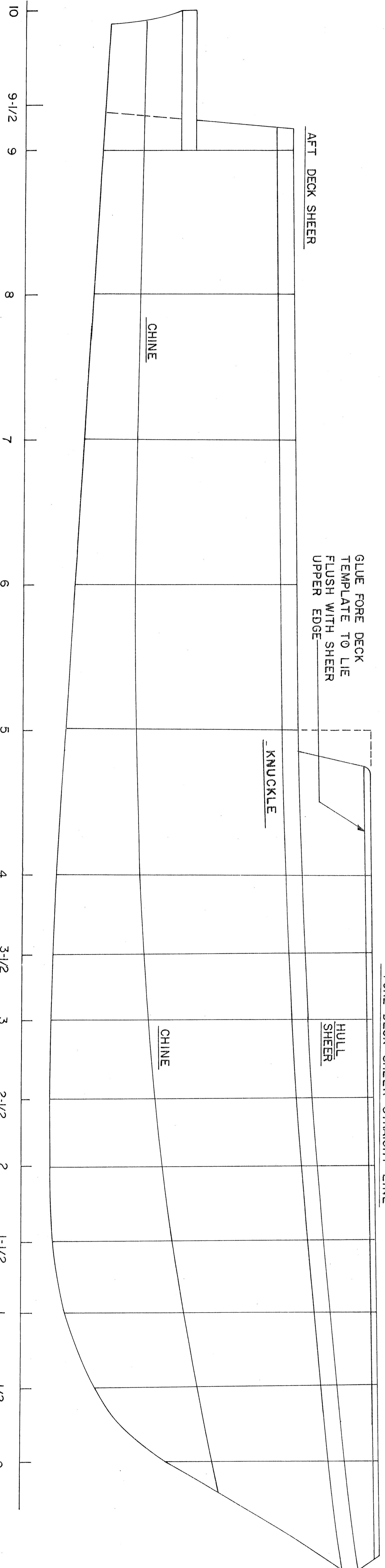
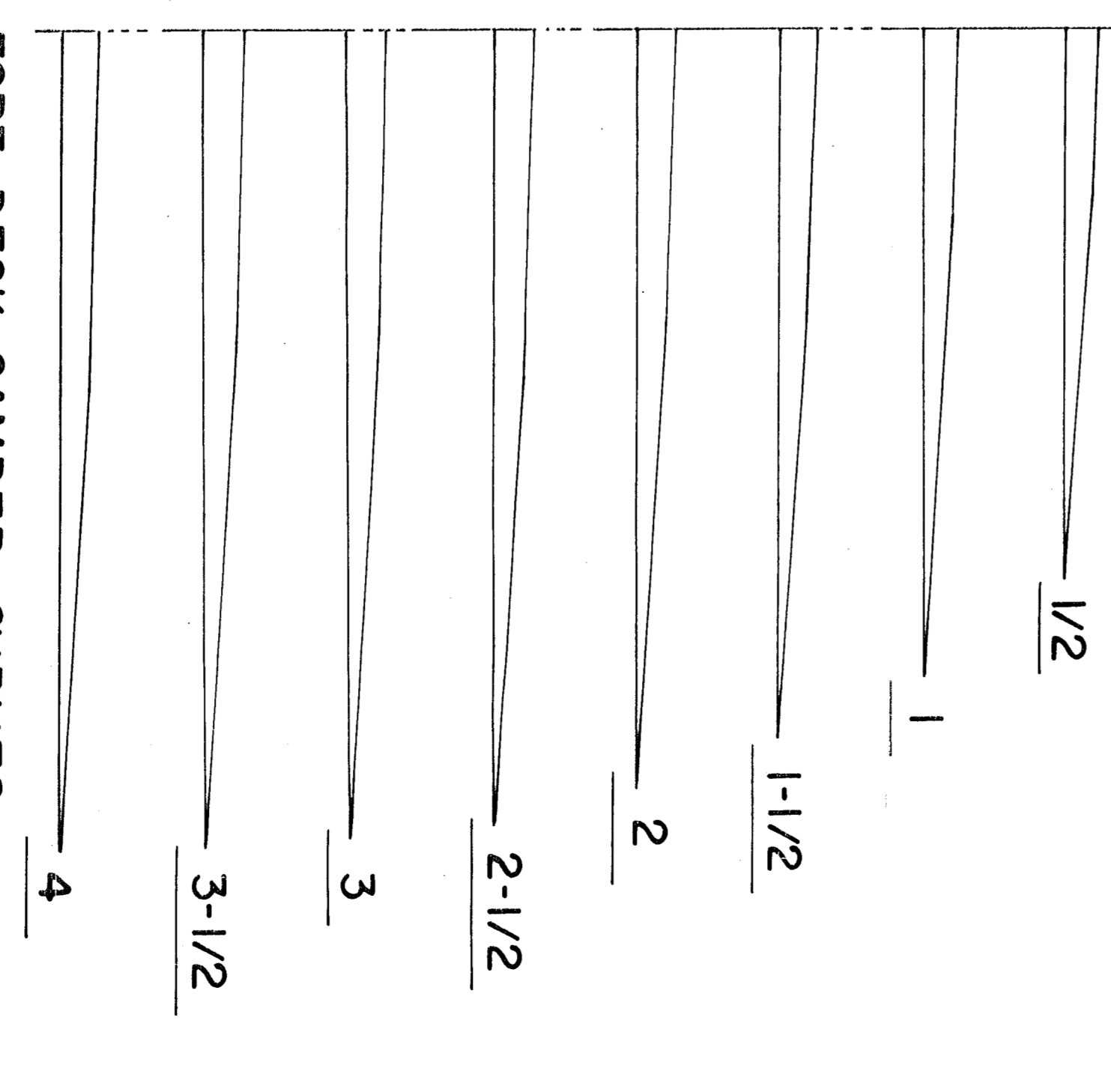
FORE DECK TEMPLATE



TEMPLATES ARE DRAWN TO SCALE WIDTH OF PROTOTYPE - REMOVE 1/8" OUTBOARD FROM INDICATED & IF USING 1/8" THICK SHEER PIECE & 1/16" PLANKING THIS WILL COMPENSATE FOR SCALE BEAM 0 AFTER PLANKING.

FORE DECK CAMBER CURVES

& OF PROTOTYPE FOR MODELERS USING ALTERNATE WOOD WIDTHS



RADIO CONTROL BOAT MODELER

USCG 32' PWB 32344 (1984)

DESIGNED BY VICTOR M. BACA

DRAWN BY VICTOR M. BACA

INKED PLANS BY JOE DEMARCO

ALL RIGHTS RESERVED SHEET 2 OF 3 FSBP 0391