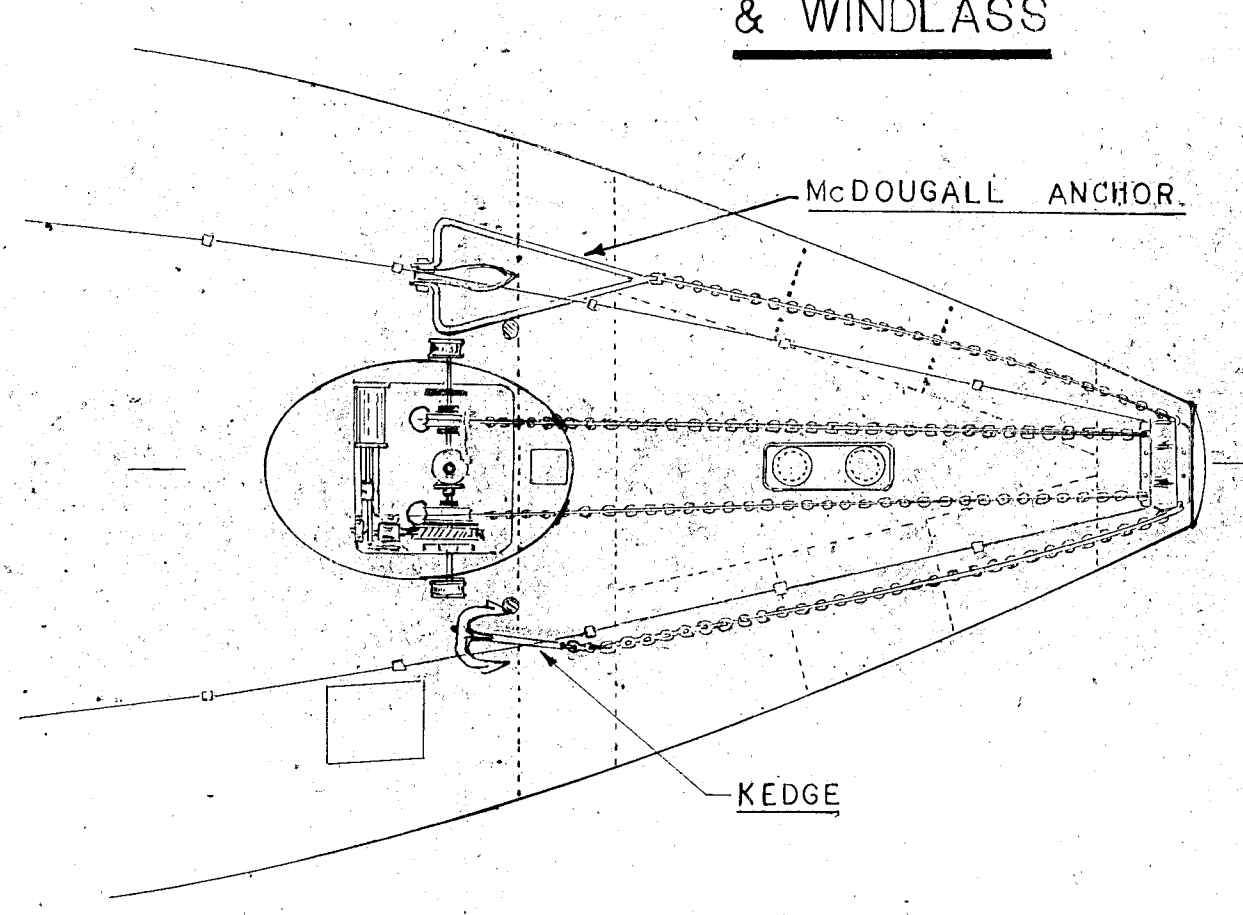
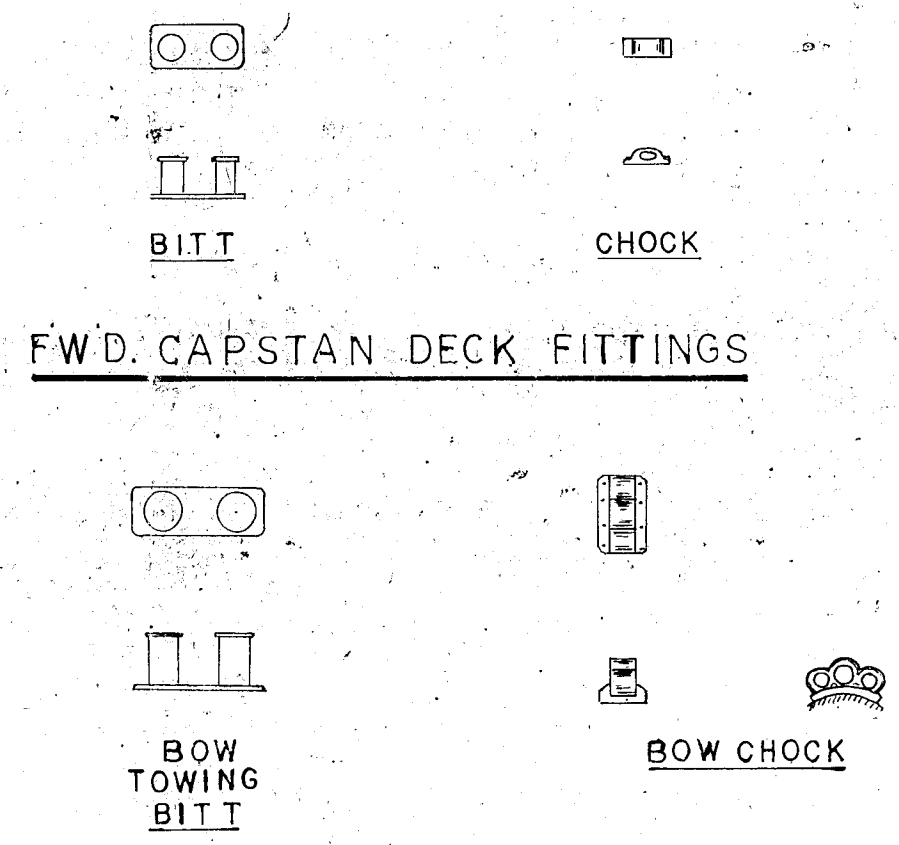
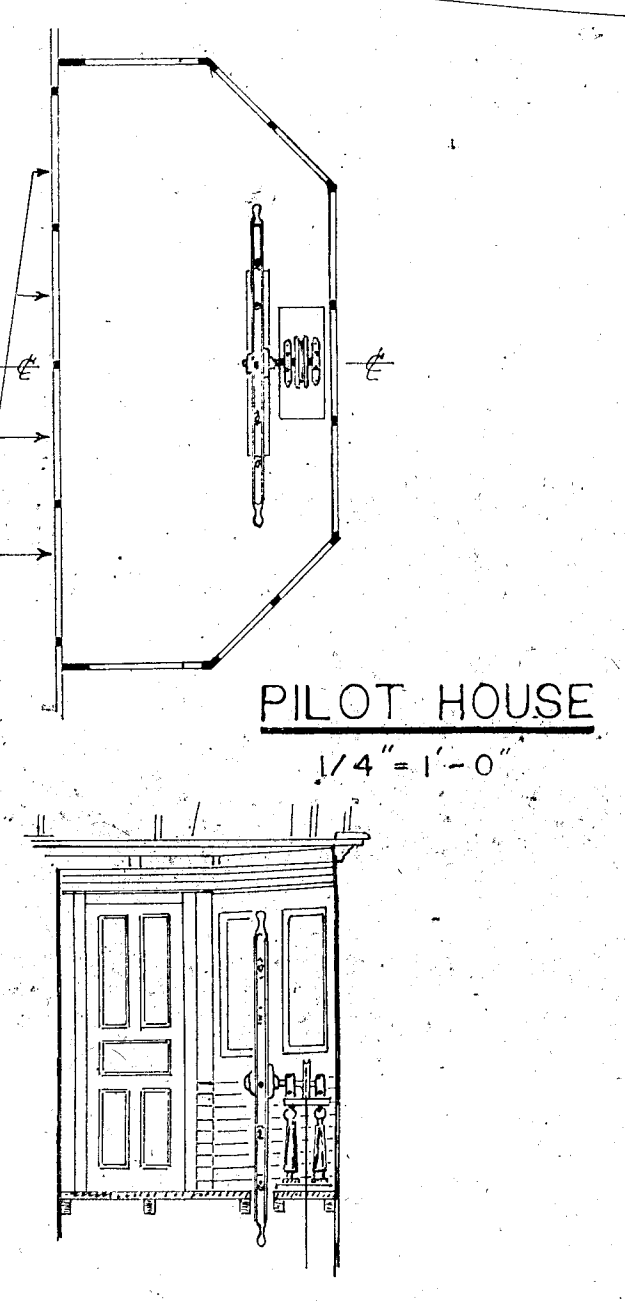
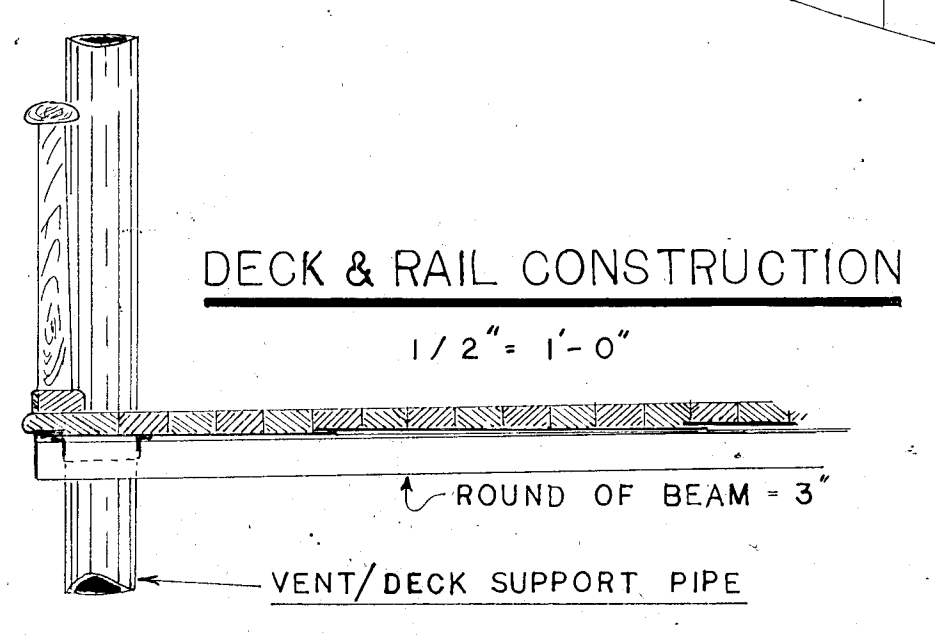
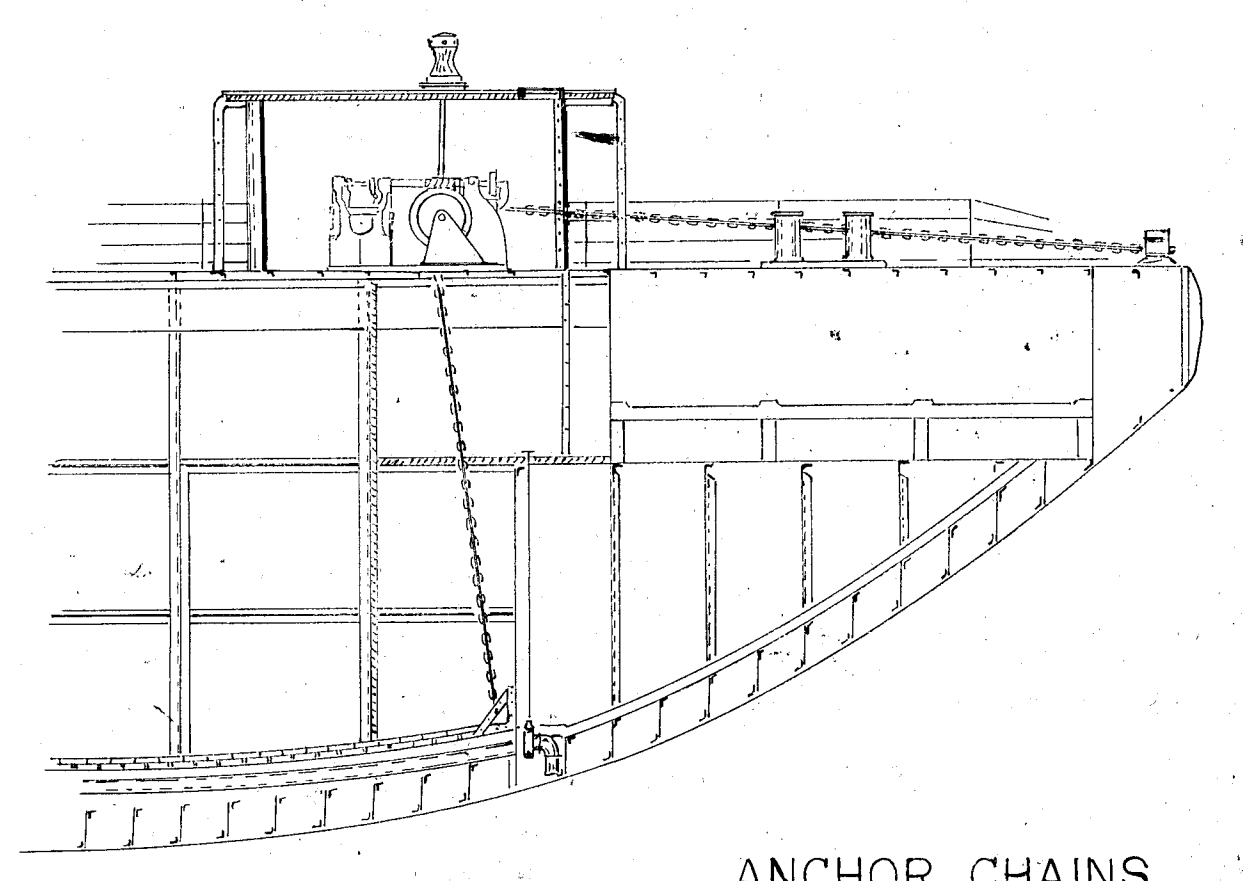
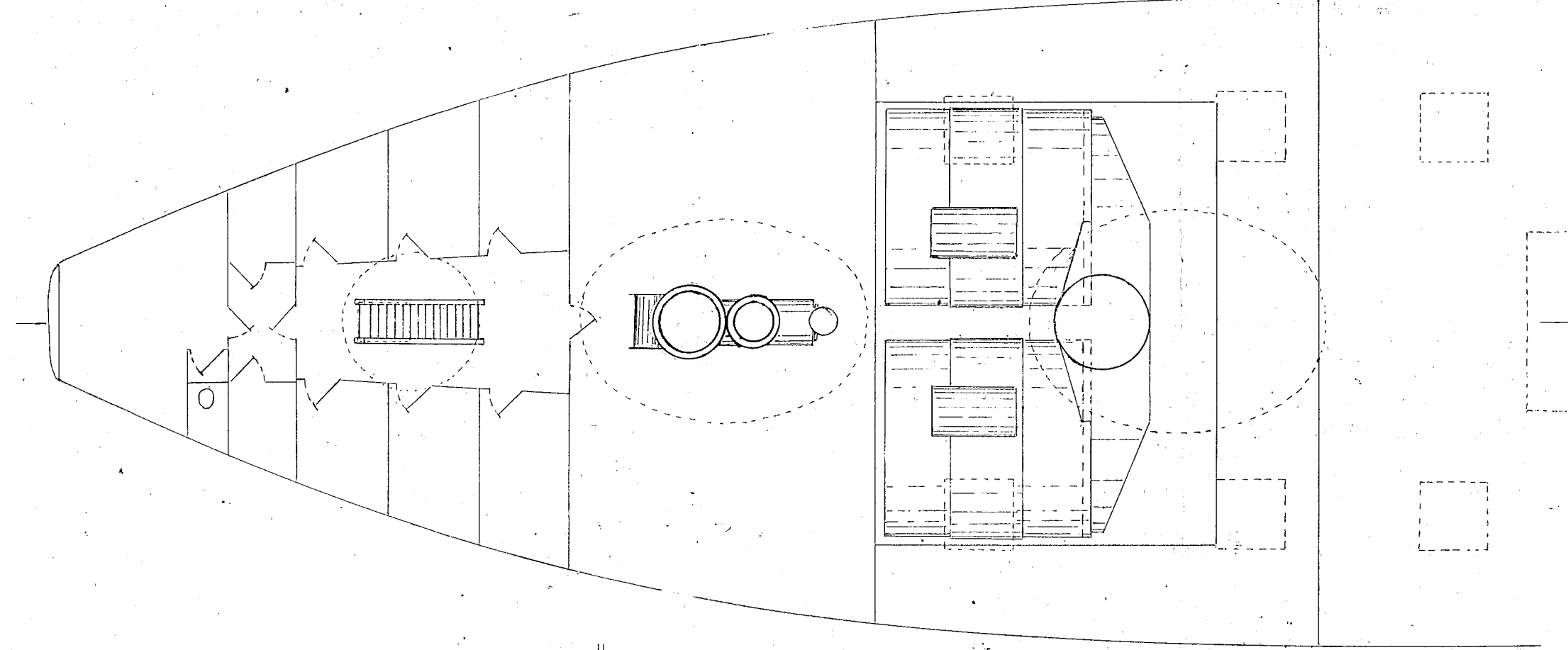
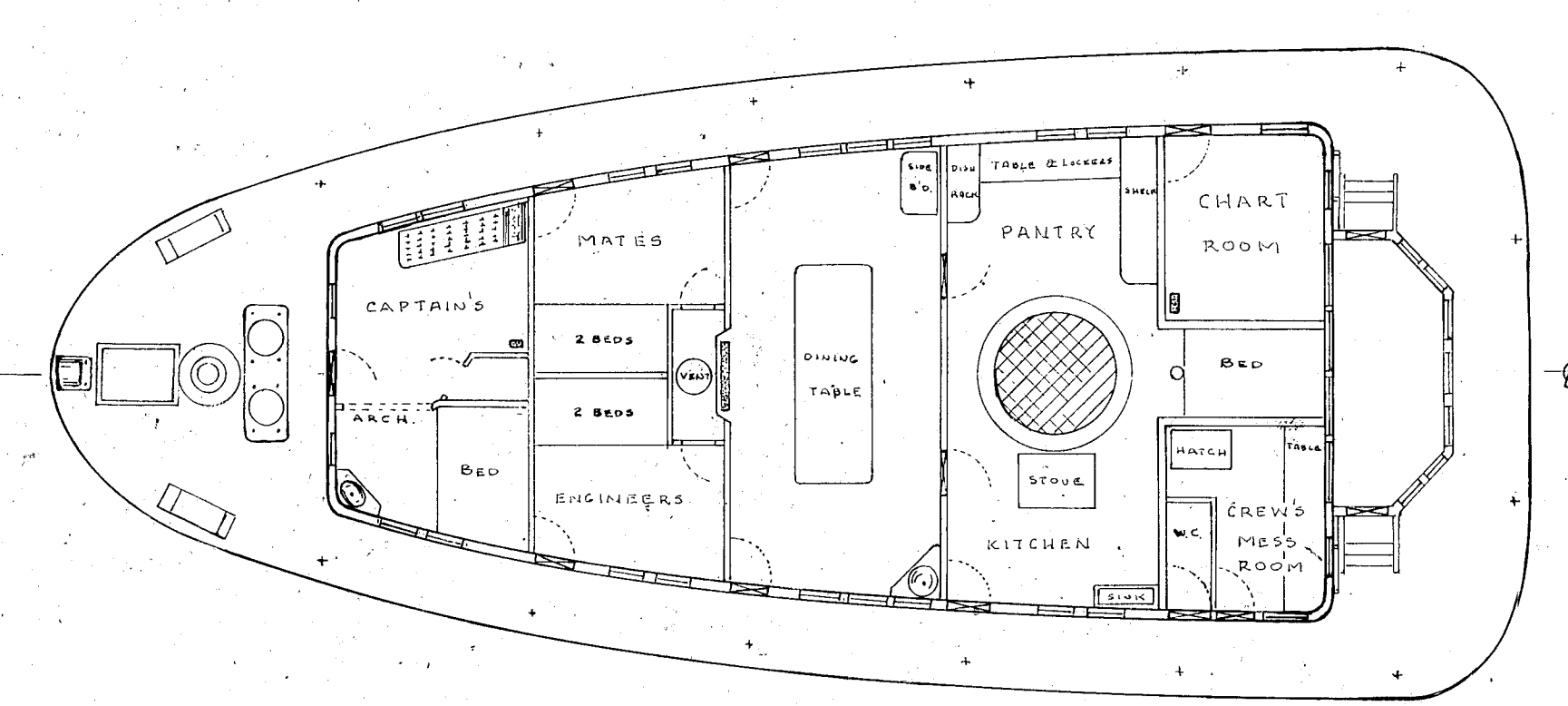
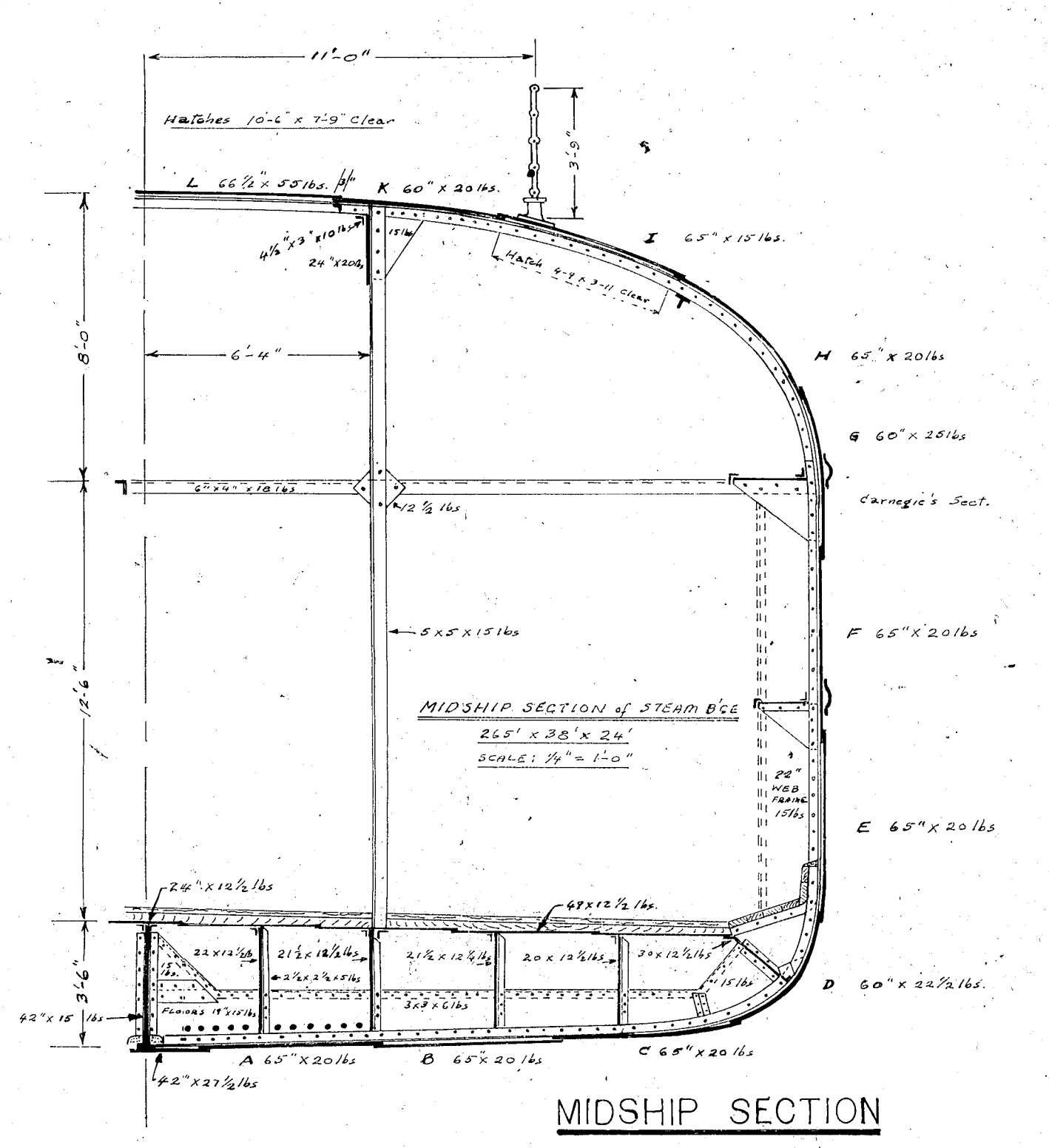
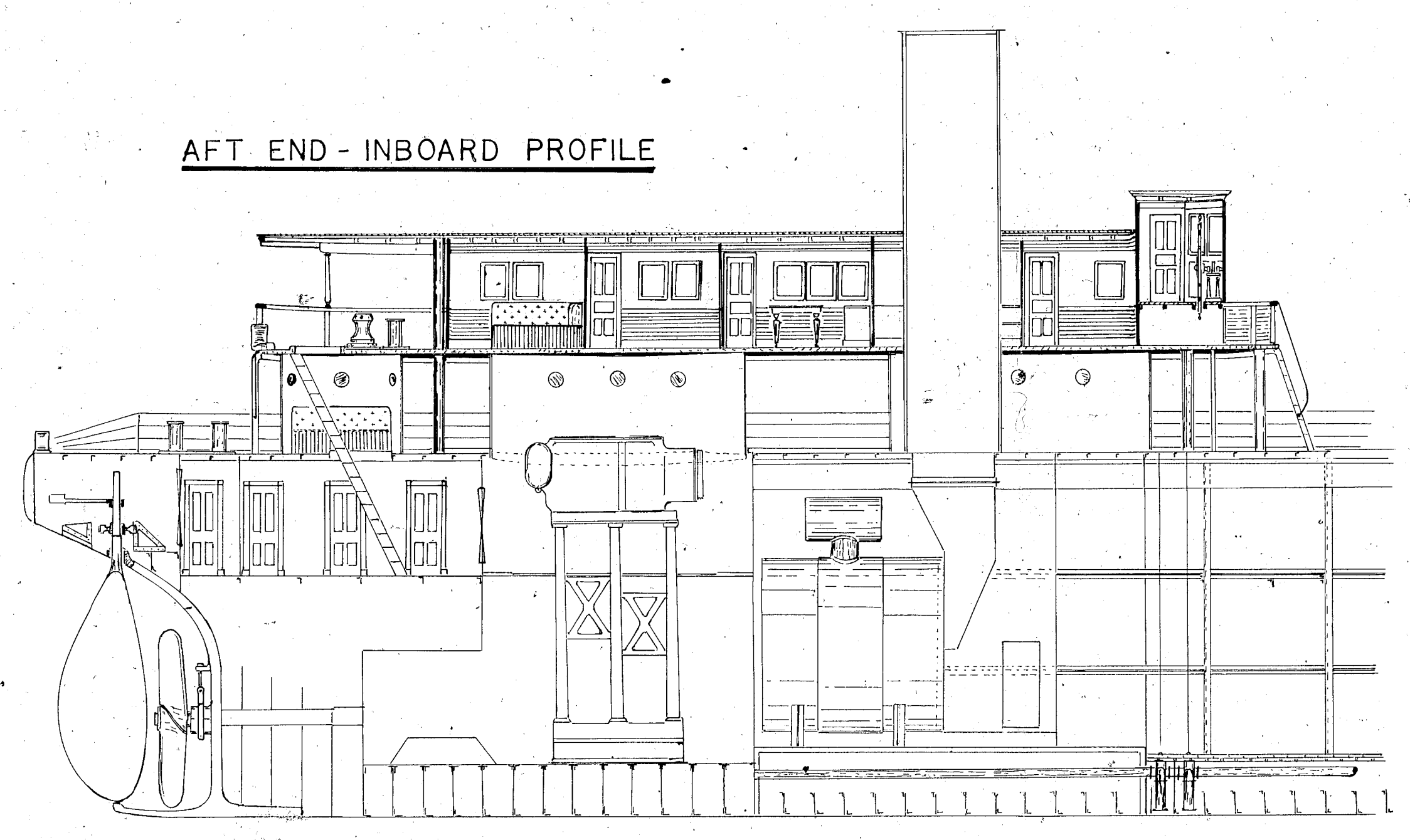
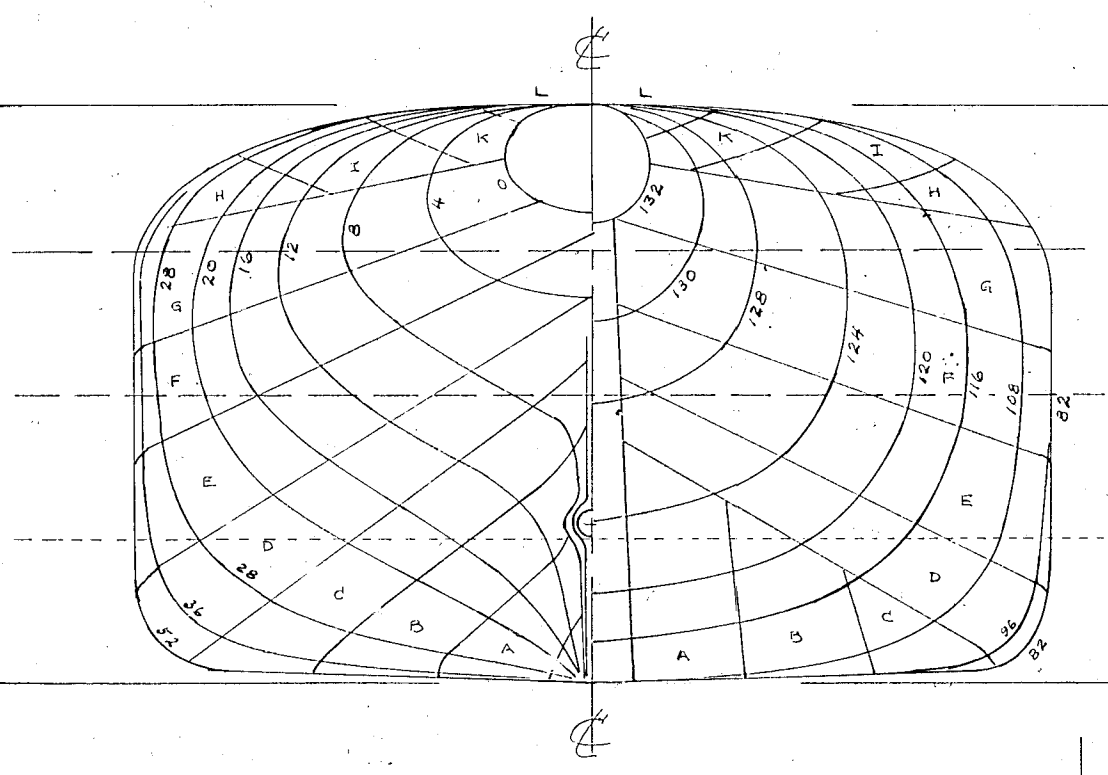
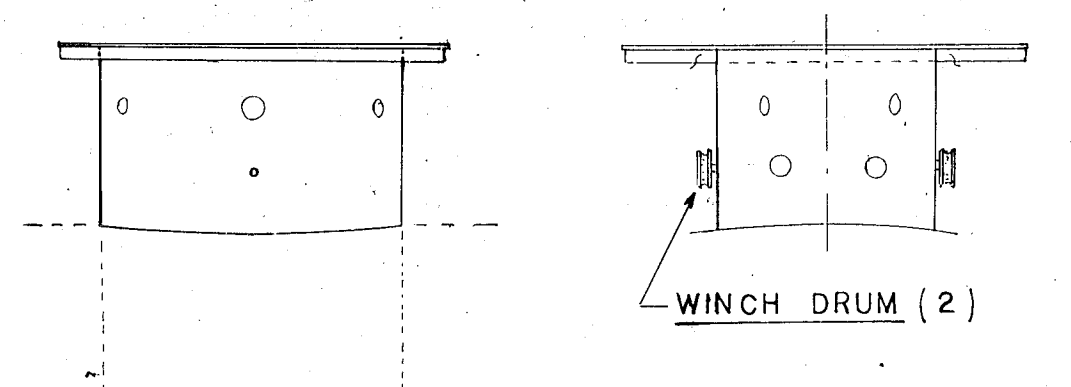
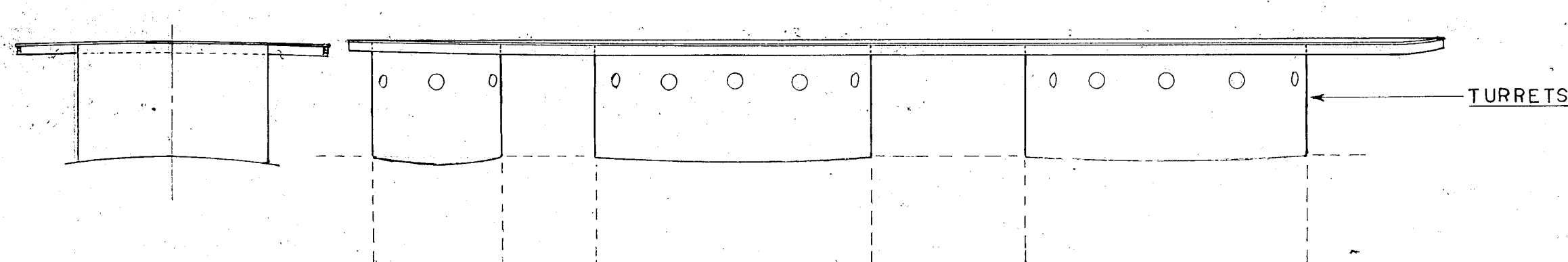
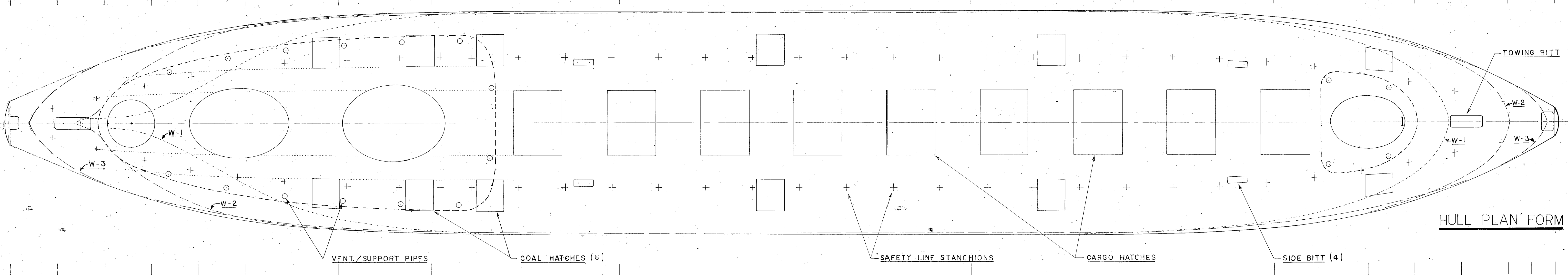
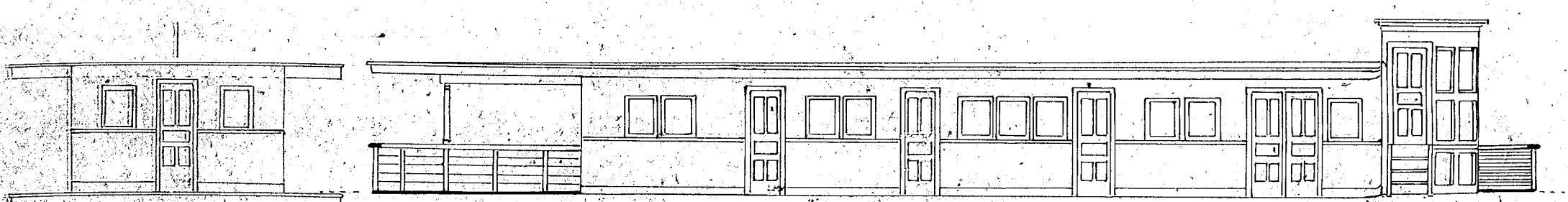


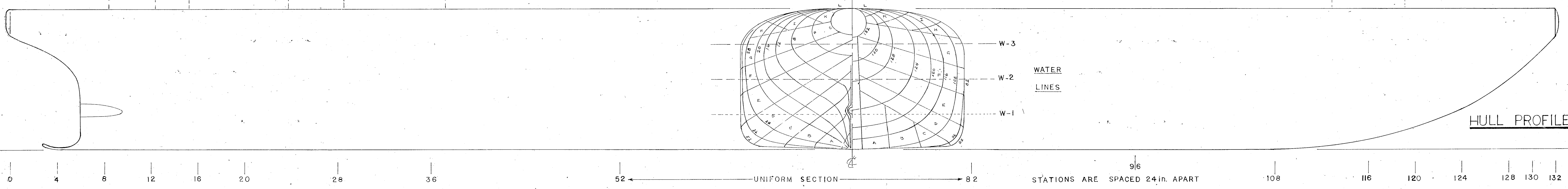
AFT END - INBOARD PROFILE



DECK HOUSE OUTBOARD PROFILE



HULL PROFILE



COLORS

BLACK: HULL, TURRETS, BITTS, CHOCKS, FUNNEL, INSIDE OF COWLS, VENT PIPE EXTENSION FOR LIFEBOAT BOOMS

DARK VARNISHED WOOD: DECK & PILOT HOUSES

VARNISHED WOOD: DECKHOUSE DECK

WHITE: MASTS, DECKHOUSE TOP & EQUIPMENT

INFORMATION ON THE WHALEBACKS CAN BE FOUND IN:

INLAND SEAS, quarterly publication of the Great Lakes Historical Society.

McDOUGALL'S DREAM by John Wiltorling Great Lakes Historical Society

AUTOBIOGRAPHY OF ALEXANDER McDOUGALL IN THE BELLY OF A WHALE by Elmer Eganman

PIGBOAT ... the Story of the WHALEBACKS, by Ryck Lydecker

AND PHOTOGRAPHS ARE AVAILABLE FROM MANY OF THE MARINE MUSEUMS AROUND THE LAKES.

McDOUGALL WHALEBACK		CHARLES W. WEITMORE		HULL
TYPE	265	38'	17'	1891
DATE	3-1-79	SCALE	1/8" = 1'-0"	SHEET
NO.	1033	THE ARCHER CO.		1033
COLUMBUS, OHIO		COLUMBUS, OHIO		1933