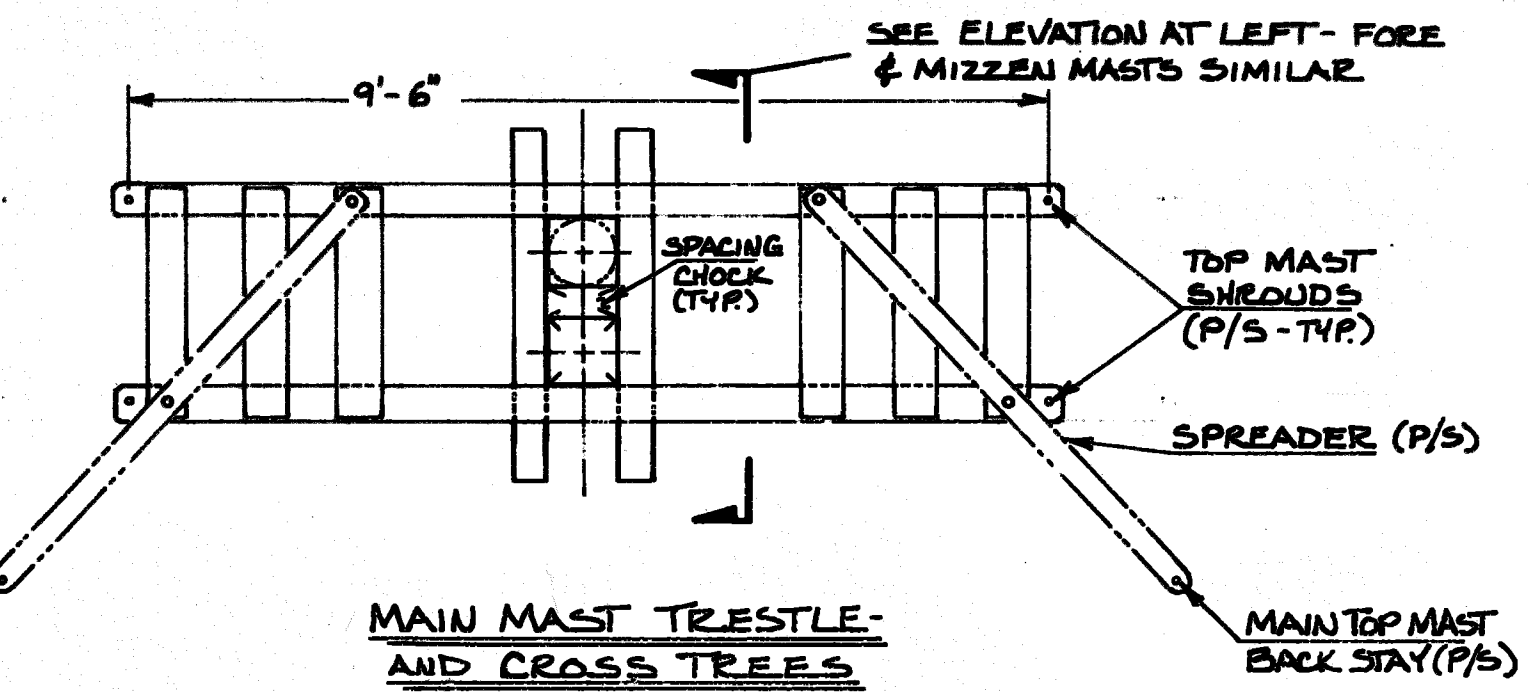
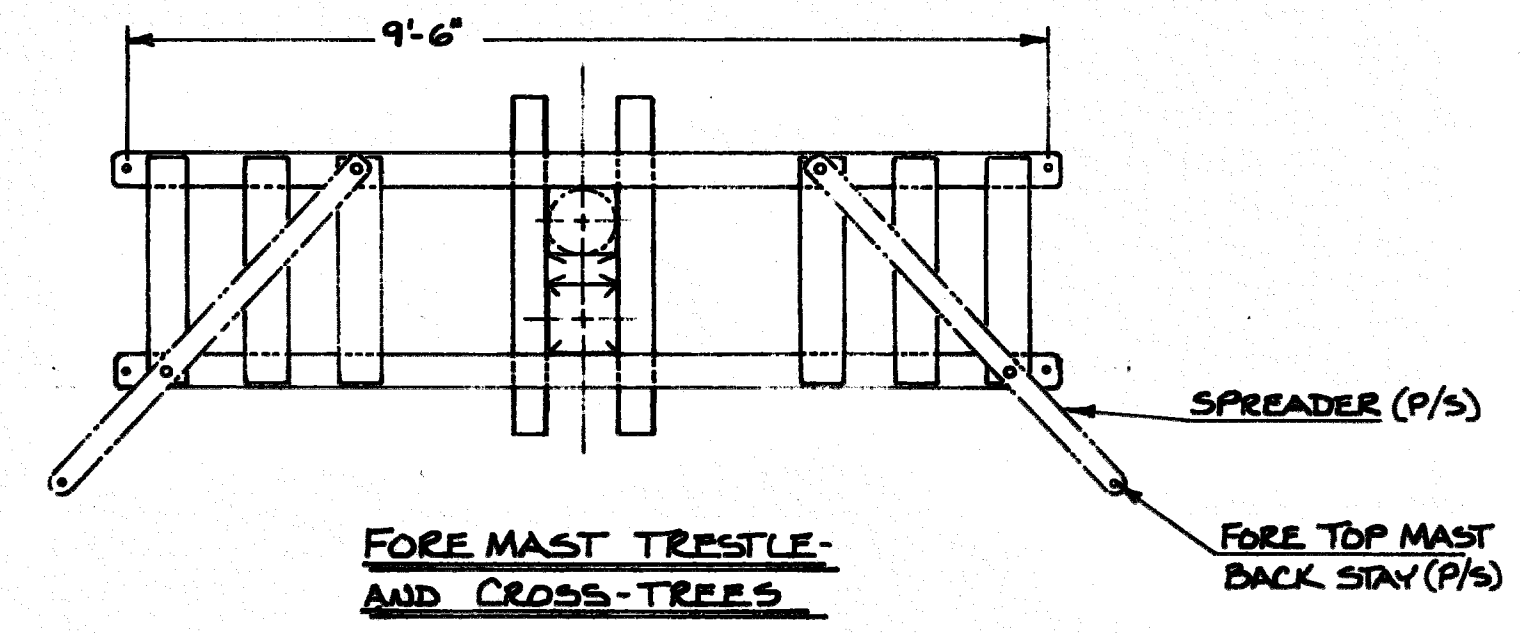
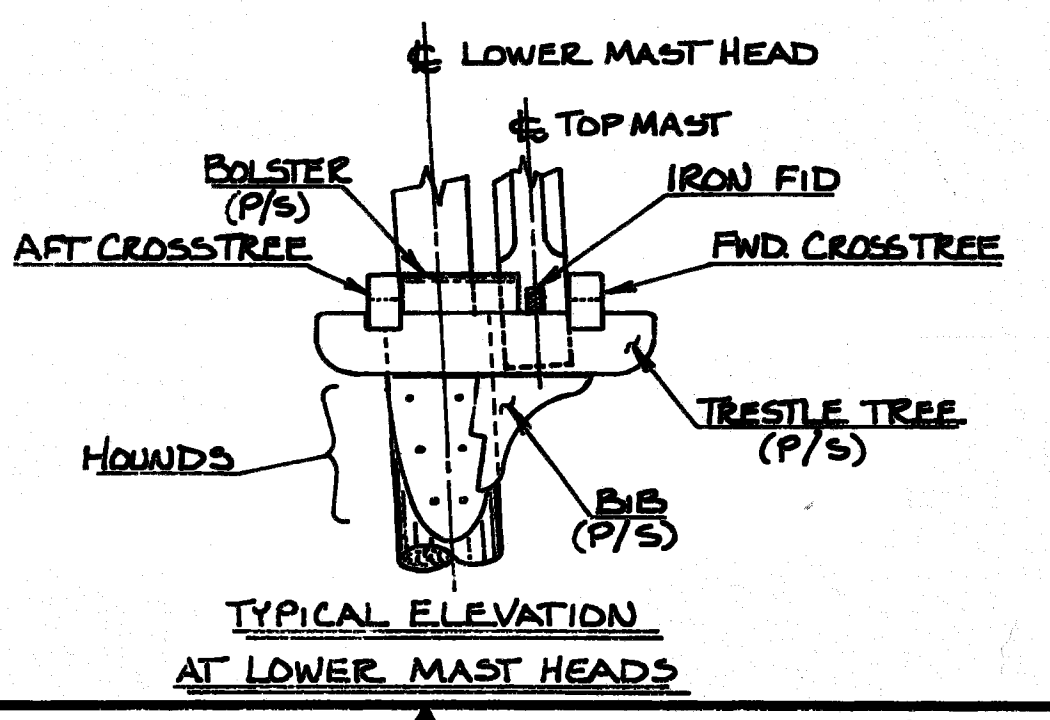
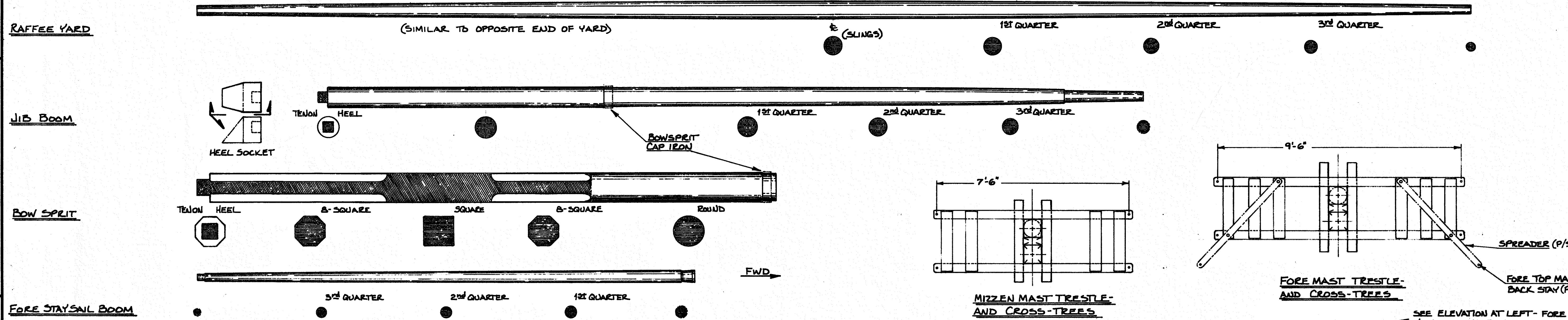
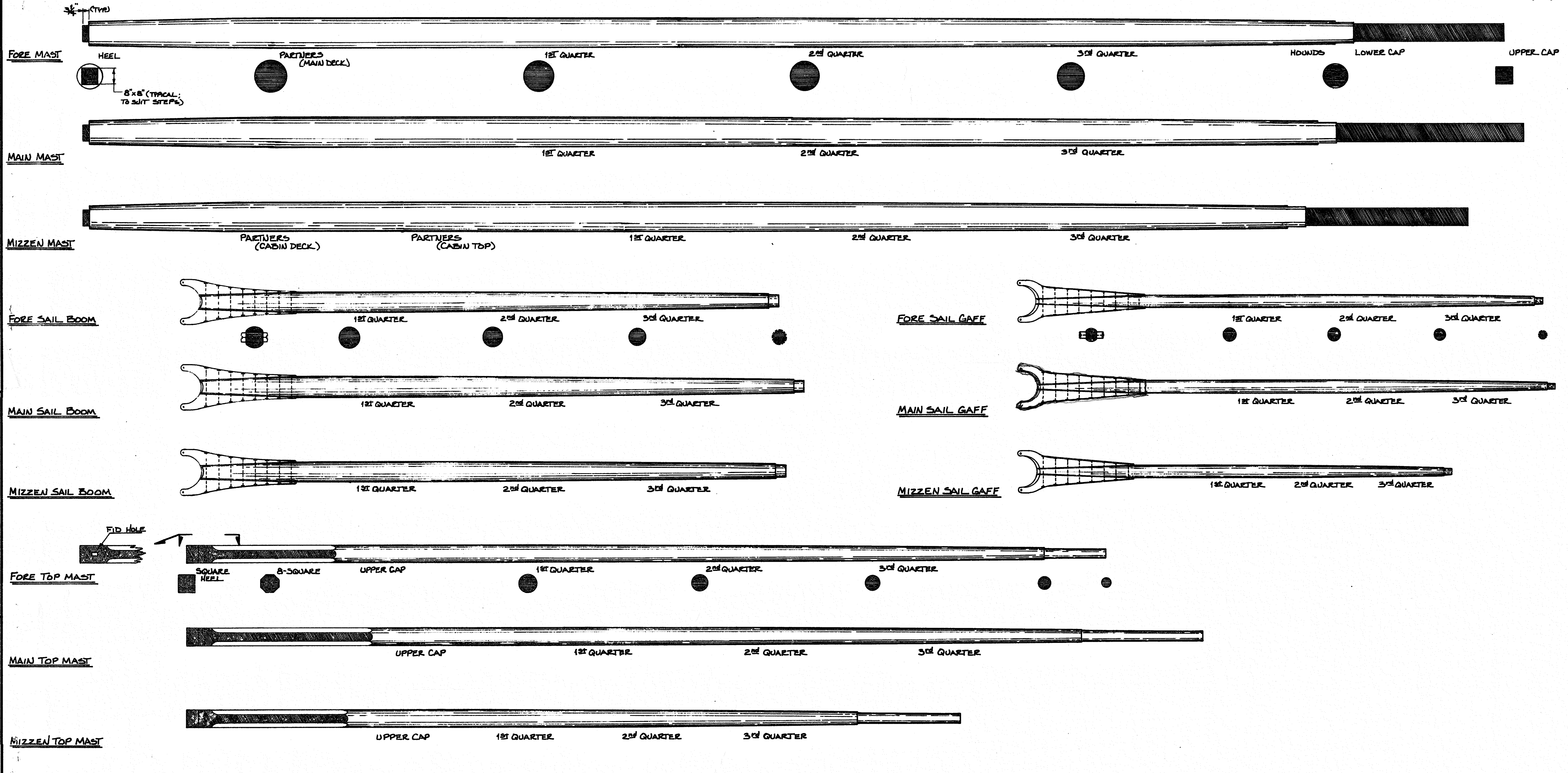


8 7 6 5 4 3 2 1

REVISIONS				
REV. NO.	ZONE	DESCRIPTION	DATE	APPROVED



PART	DIA. AT THE ...	QUARTERS			HEAD		HEADS & OVER ENDS	TOTAL LENGTH	REMARKS
		1st	2nd	3rd	LOWER PART	UPPER PART			
FORE MAST	14 3/8"	14"	12 3/8"	8 3/8"	8 3/8"	7"	58'-0"	Add 3 1/2" for table	
MAIN MAST	14 3/8"	14"	12 3/8"	8 3/8"	8 3/8"	7"	59'-6"		
MIZZEN MAST	14 3/8"	14"	12 3/8"	8 3/8"	8 3/8"	7"	57'-0"		
FORE SAIL GAFF	6 3/8"	6"	5 1/2"			3 3/8"	21'-3"		
MAIN SAIL GAFF	6 3/8"	6"	5 1/2"			3 3/8"	21'-4"		
MIZZEN SAIL GAFF	6 3/8"	6"	5 1/2"			3 3/8"	17'-0"		
FORE SAIL BOOM	10 1/4"	9 3/8"	8 3/8"			7"	23'-9"		
MAIN SAIL BOOM	10 1/4"	9 3/8"	8 3/8"			7"	24'-9"		
MIZZEN SAIL BOOM	10 1/4"	9 3/8"	8 3/8"			7"	24'-0"		
FORE TOP MAST	8 3/8"	8 3/8"	7 1/2"	6 1/2"	4 1/2"		38'-0"		
MAIN TOP MAST	8 3/8"	8 3/8"	7 1/2"	6 1/2"	4 1/2"		42'-0"		
MIZZEN TOP MAST	8 3/8"	8 3/8"	7 1/2"	6 1/2"	4 1/2"		32'-0"		
RAFFEE YARD	8 3/8"	7 1/2"	6"			3 3/8"	50'-0"		
JIB BOOM	8 3/8"	8 3/8"	7 1/2"				5'	32'-0"	
BOW SPRIT	14"						22'-9"		
STAY SAIL BOOM	5 1/2"	5 1/2"	4 1/2"			3 3/8"	19'-6"		

DRAWN BY: J. C. BIRMINGHAM
 APP'D. BY: _____
 DATE: _____

TIMOTHY GAUL MARINE DESIGN
 naval architect marine engineer
 Sturgeon Bay, WI 54235

PROJECT: LAKE MICHIGAN SCHOONER PROJECT NO.: 93082
 OWNER: LAKE SCHOONER EDUCATION ASSOCIATION SCALE: 1/2" = 1'-0"
 TITLE: MASTS AND SPARS REV. - DATE: _____
 DRAWING NO.: 613-003

8 7 6 5 4 3 2 1